

NOW HIRING

MEDICAL EXAMINERS

OFFICE OF THE MEDICAL EXAMINER, LOUISVILLE



WHO WE ARE

Recognized as national leaders in our respective fields, the scientific staff members of the Kentucky Office of the Medical Examiner assist Kentucky coroners and law enforcement agencies in all aspects of death investigation. Our agency has a long history of stability within the community and the state, and has maintained NAME accreditation since 2002. We foster an engaging, positive workplace culture, are committed to excellence, and believe in the importance of mutual respect, kindness, and trust.

\$257,937

LOW CASE VOLUME



LITTLE TO NO SCENES



VIRTUAL WORK OPTIONS

COMPENSATION & BENEFITS

- **Medical Examiner I (Board Eligible) - \$245,654** after completing a 6-month probationary period.
- **Medical Examiner II (Board Certified) - \$257,937** after completing a 6-month probationary period.
- Health Insurance
- Retirement
- Annual and sick days
- Paid holidays
- Flexible schedules
- Virtual Work Options



JUSTICE AND
PUBLIC SAFETY CABINET

REQUIREMENTS

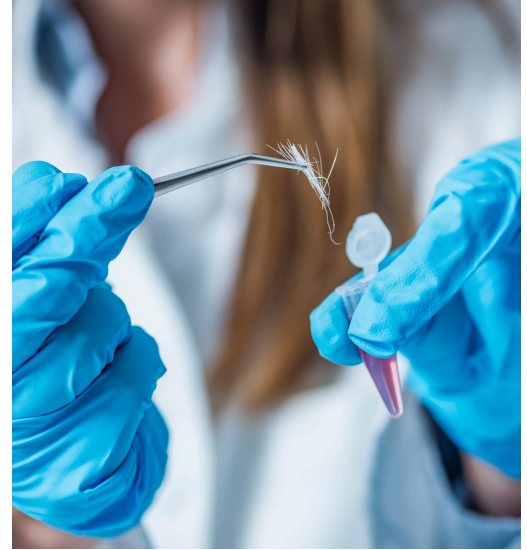
This executive branch/ unclassified state position requires board certification or eligibility by the American Board of Pathology in Anatomic and Forensic Pathology, and licensure to practice medicine in the state of Kentucky at the time of employment.

RESPONSIBILITIES

This position will provide forensic pathology services and/or consultative services to district medical examiners, coroners and deputy coroners upon request. Additionally, they will perform forensic pathological examinations and assist in developing and providing technical literature/ advice to law enforcement, medical examiners, coroners and other medical personnel.

OUR OFFICE

The office currently employs 7 full-time, board-certified forensic pathologists who are supported by ample administrative staff and autopsy technicians. Our office conducts around 1,800 examinations per year (including external examinations), is well-equipped, and features LODOX imaging technology. Odontology, neuropathology, anthropology services are available. Examinations, weekends, and holiday coverage are shared equitably among the staff, and attendance at scenes is exceedingly rare (less than 5 per year). Vacation/off-time coverage and educational seminar participation are supported.



LOUISVILLE AT A GLANCE

Louisville is a city rich with cultural opportunities and sporting venues, with a very affordable cost of living, and a relaxed southern living atmosphere. The city is close to both Frankfort and Lexington and boasts many outdoor activities (hiking, camping, fishing, rock climbing, and college athletics), multiple bourbon distilleries, cuisines spanning all around the world, and has easy access to entertainment such as Churchill Downs, 4th Street Live, YUM Center, museums (Louisville) and in Kentucky's horse capital (Lexington) Keeneland, Rupp Arena, Kentucky Horse Park, and numerous historic sites.

10511 LaGrange Rd, Louisville, KY 40223

For additional information contact **William Ralston, MD**

☎ 502-489-5209 ✉ William.Ralston@ky.gov

View all available positions at:
CAREERS.KY.GOV