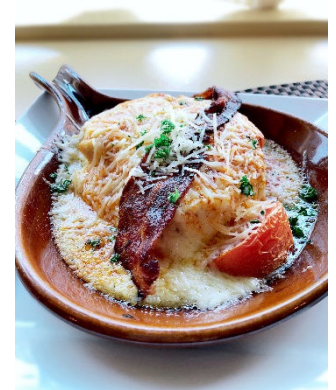




**The Kentucky Justice and Public Safety Cabinet is seeking applications for a Kentucky State Medical Examiner at the State Medical Examiner's Office in Louisville, Kentucky.**

The Office of the Kentucky Medical Examiner within the Justice and Public Safety Cabinet announces an opening for a full-time, board-certified forensic pathologist to be available September 1, 2024, in Louisville, Kentucky (Jefferson County). The successful candidate will join a team who fosters an engaging, positive workplace culture, is committed to excellence, and believes in the importance of mutual respect, kindness, and trust. The ideal person will join 7 full time, board-certified forensic pathologists who are supported by ample administrative staff and autopsy technicians. The Office of the Chief Medical Examiner has a long history of stability within the community and the state and has maintained NAME accreditation since 2002



Louisville is a city rich with cultural opportunities and sporting venues, with a very affordable cost of living, and a relaxed southern living atmosphere. The city is close to both Frankfort and Lexington and boasts many outdoor activities (hiking, camping, fishing, rock climbing, and college athletics), multiple bourbon distilleries, cuisines spanning all around the world, and has easy access to entertainment such as Churchill Downs, 4<sup>th</sup> Street Live, YUM Center, museums (Louisville) and in Kentucky's horse capital (Lexington) Keeneland, Rupp Arena, Kentucky Horse Park, and numerous historic sites. Vacation/off-time coverage and educational seminar participation are supported. The office conducts around 1,800 examinations per year (including external examinations), is well-equipped, and features LODOX imaging technology. Examinations, weekends, and holiday coverage are shared equitably among the staff. Attendance at scenes is exceedingly rare (less than 5 per year).



This executive branch/unclassified state position requires board certification or eligibility by the American Board of Pathology in Anatomic and Forensic Pathology, and licensure to practice medicine in the state of Kentucky at the time of employment.



The state salary offered, after a 6-month probationary period, is \$225,000.00 for a Medical Examiner I (Board Eligible) and \$236,250.00 for a Medical Examiner II (Board Certified). As a state employee, the new forensic pathologist will enjoy full benefits, including healthcare and/or flexible spending accounts, participation in the state retirement system, and options to participate in the deferred compensation program.

The Commonwealth of Kentucky does not discriminate on the basis of race, color, religion, national origin, sex, age, disability, or veteran status in employment or other provision of services.



William Ralston, MD  
Chief Medical Examiner  
OCME  
10511 LaGrange Road  
Louisville, KY 40223  
502-489-5209  
[William.Ralston@ky.gov](mailto:William.Ralston@ky.gov)

