

ASSOCIATE MEDICAL EXAMINER OPENING

Snohomish County Medical Examiner's Office — Washington State

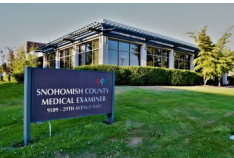
ANNOUNCEMENT: OCTOBER 2019 HIRE DATE: JANUARY 1, 2020

Snohomish County seeking an Associate Medical Examiner

\$154,691.319 to \$218,583.30 depending on experience and qualifications.

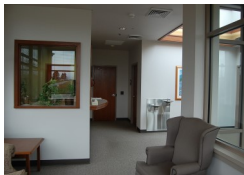
About the Opening:

Are you an experienced forensic pathologist with a genuine concern for others and an upbeat attitude who can exercise independent judgment and work in tandem with the Chief Medical Examiner? The Snohomish County Medical Examiner's Office is seeking a Medical Examiner Associate to join our team. The current Chief Medical Examiner will retire on December 31, 2019, creating an opening for an Associate Medical Examiner. It is anticipated that an additional Associate Medical Examiner position may be added in the Snohomish County 2020 budget.



About the Office

The office serves Snohomish County, Washington, which includes urban and rural areas (2,196 square miles) and a population of 805,120 people. The office also provides autopsy services to San Juan County. The office operates out of a modern 14,057 square foot facility with a staff of 16 and a budget of \$3 million. Our ABMDI-certified investigative staff provides 24/7 coverage, and we have excellent pathologist assistants and a supportive administrative staff. During the calendar year 2018, the office assumed jurisdiction for 987 cases and performed 414 autopsies and 251 external examinations for Snohomish County. The office has healthy relationships with local law enforcement agencies, first responders and medical personnel.



About the Caseload:

We anticipate our Medical Examiner's caseload to be below the NAME standard of 250 cases per year. The Medical Examiners are assisted by two full-time, well-trained Pathology Assistants, ABMDI certified Investigators and two full-time Investigation Assistants providing excellent administrative support. The business office is comprised of an Operations Manager and Management Assistant. We are seeking accreditation by the National Association of Medical Examiners and the International Association of Coroners and Medical Examiners. See our [Annual Report](#) for more information.



Benefits Package:

We are proud to offer an outstanding benefit package to employees and their dependents. Snohomish County is invested in your success and growth and offers a total compensation package, including the following to our employees:

Management Leave: Annual leave entitlement of up to 25 days (prorated based on start date) for the first calendar year with increasing leave based on years of service.

Pensions: County employees are eligible for Washington State PERS enrollment and deferred compensation plan with matching contribution.

Benefits: The County offers a wide range of benefits including, medical, dental, vision, life insurance, LTD, deferred compensation and more.

About the Community:



Snohomish County is in Seattle's Northcountry, located in northwest Washington between the Puget Sound and the Cascade Mountains. Snohomish County offers diversity that few counties can match, taking advantage of fresh and saltwater beaches, mountains, and enjoying activities such as snow skiing, hiking and bike trails, and water-sports including water skiing, canoeing, boating and kayaking in the sound, rivers and lakes. The county has rich scenery and a thriving economy. Snohomish County is a great place to [live](#), [work](#), [play](#), and raise a family.

Snohomish County Medical Examiner's Office
Contact.MedAdmin@SnoCo.org
9509 29th Ave West, Everett, WA 98204
(425) 438-6200

Online at: SnohomishCountyWA.gov/ME