

1

---

---

---

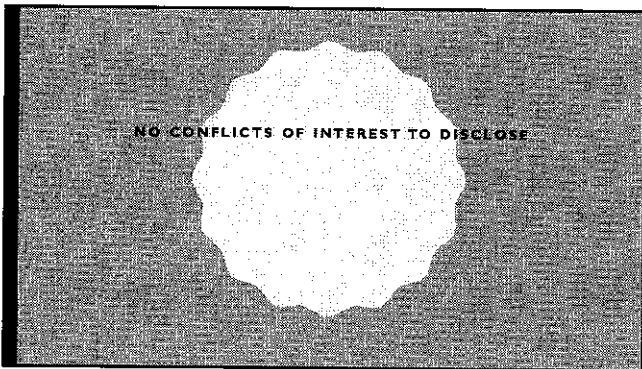
---

---

---

---

---



2

---

---

---

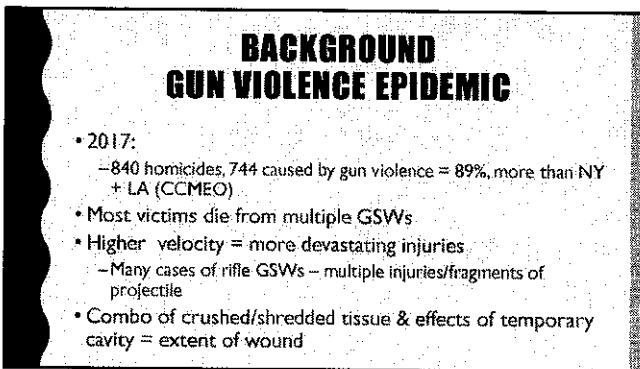
---

---

---

---

---



3

---

---

---

---

---

---

---

---

### BACKGROUND OPIOID ADDICTION EPIDEMIC

- 2017:
  - 1,167 deaths due to opioid overdose (CCMEO)
    - 787 heroin related
    - 669 fentanyl related
      - Strong synthetic opioid, 50-100 x morphine
- CCMEO first to identify drug use trends
  - Info relayed to IDPH, ED Drs to aid Tx

---

---

---

---

---

---

---

---

4

### BACKGROUND FREEDOM OF INFORMATION ACT

- 1967:
  - public right to access info from federal agencies
  - Exemptions related to national security, trade secrets, PHI, etc.
- 2017:
  - CCMEO 400 FOIA requests (more than any other county dept)
    - Journalists, residents, law enforcement, medical professionals and researchers related to opioids or gun violence
- ALL: CCMEO's data public under Illinois law

---

---

---

---

---

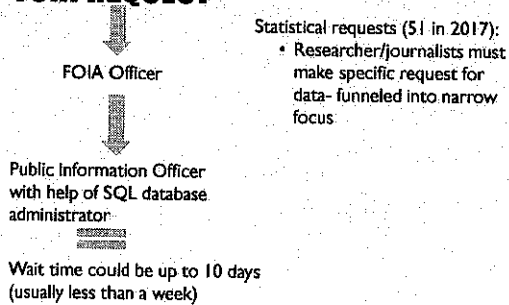
---

---

---

5

### FOIA REQUEST




---

---

---

---

---

---

---

---

6

### LABLYNX

- Electronic case management system
- Introduced August 2014
- Each case entered has geographic, demographic, COD/MOD in system
- Hosted by cloud
- Nightly backup of all data to server on premises

7

---

---

---

---

---

---

---

---

### CCMEO-/BOT PARTNERSHIP

- Feb 2017:
  - CCMEO + BOT created dashboards, maps, open data set of all CCMEO deaths since 2014
  - BOT, dept of Geographic Information Systems (GIS) extracted SQL data from backup
  - Geocoded data
  - Populated online map and page County's Open Data Portal
- January 30<sup>th</sup>, 2018 open to the public
- Maps and dashboard populated by online database updated nightly:
  - COD/MOD
  - Demographics
  - Location of incident
- Separate maps for opioid deaths and gun violence deaths
- Users can create heat maps, locate cluster, export data to analyze

8

---

---

---

---

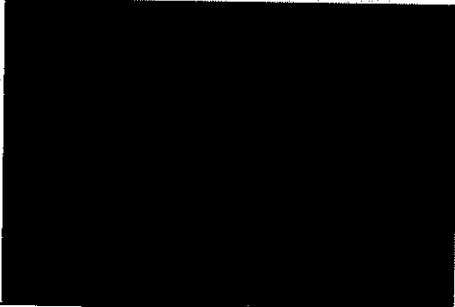
---

---

---

---

### PREVIEW



9

---

---

---

---

---

---

---

---

### COST

- \$0
- Created in-house by GIS and IT Communications creating templates included in existing contracts with software companies
  - Cook County GIS department pulls or receives data directly from Labyrinth database nightly. GIS and open data teams fed templates on County maps portal and County Open Data Portal
- Map portal paid as part of enterprise software license with Esri
- Data portal included with Socrata contract

10

---

---

---

---

---

---

---

---

### RESULTS

- FOIA requests reduced
  - 51 statistical requests by in 2017 by March 1<sup>st</sup>
  - 14 statistical requests in 2018 by March 1<sup>st</sup>
- Increased transparency
- Real-time data for researchers, law enforcement, journalists and public
- Chicago Sun Times used database to report on kratom:
  - <https://chicago.suntimes.com/2018/3/5/18329523/kratom-health-supplement-targeted-by-fda-linked-to-9-deaths-in-cook-county>

11

---

---

---

---

---

---

---

---

### COMING IMPROVEMENTS

- More mobile friendly
- Eventual transition to cloud based data repository
  - Physical server outdated
- Improve capturing of opioid related deaths
  - Recent check box added to Labyrinth to better identify cases
- Extreme temperature related deaths
  - Possibly with cooling/warming centers
- Motor vehicle collisions

12

---

---

---

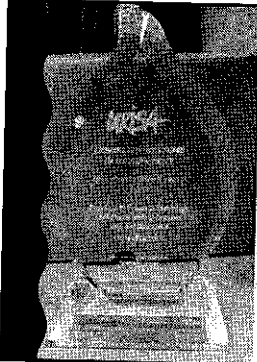
---

---

---

---

---



## OUTCOMES

- Better distribution of healthcare resources
- Assist DEA/law enforcement when there are opioid death/homicide death clusters
- Real time outbreak tracking
- More transparency of medical examiner data for researchers/journalists/general public

13

---

---

---

---


---

---


---

---


## POSSIBLE CONSEQUENCES



**Use of data for real estate**



**Criminal activity**  
Rob vacant houses



**Family disputes**  
Family members trying to shield others from the COD

14

---

---

---

---

---

---

---

---

## LIVE PREVIEW (TIME PERMITTING)

- <https://maps.cookcounty.il.gov/medexammaps/>
- Need google chrome to function properly

15

---

---

---

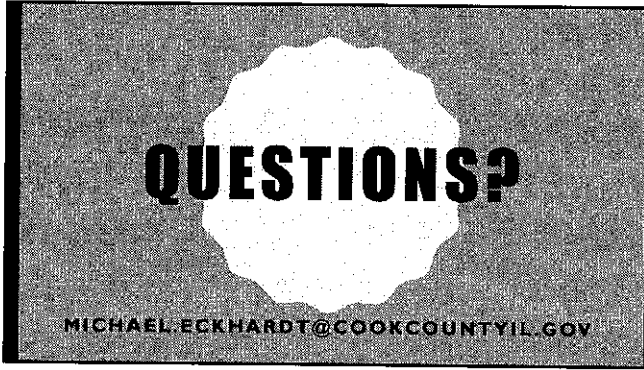
---

---

---

---

---



---

---

---

---

---

---

---